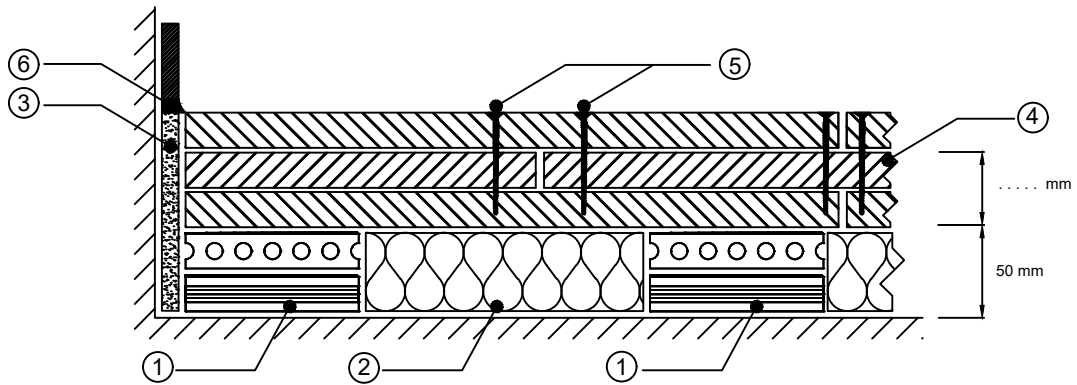


### Anti-vibration Floating floor with MDF - Typical section



1. Antivibration Rubber Pads **Vibro-EP Complex** 60 x 60 x 50 mm

Color Stiffness . . . Quantity . . . . pcs / m2

2. Mineral Wool Slab 50 mm Density 50 kg/m3

3. Perimeter Strip ISOLFon-FF  $\geq 5$  mm

4. Three layers of MDF thickness 16 mm each


5. Milling screws for wooden floor

6. Acrylic mastic

(Estimated for . . . . kN/m2 & . . . . kN/m2 dead & live load respectively)

Subject to change without notice

Design and Production according to Quality Assurance System which complies with ISO 9001.2008.

 www.alphaoustic.com info@alphaoustic.com	TITLE	SCALE	LAST DATE REVISED	SORT CODE	DRAWING NO.
	Anti-vibration Floating floor with MDF - Typical section	Do not scale drawing	07-2020	Vibro-EP complex	01